

EHS Management

TEL's environmental, health and safety initiatives have spread across the globe.

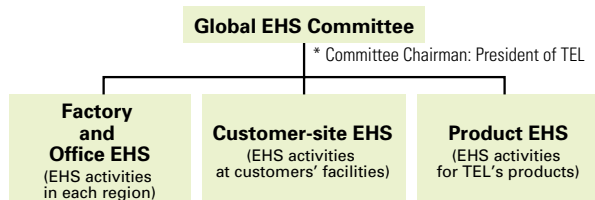
EHS Activities for Improving the Environment, Health and Safety

TEL is firmly aware how important it is to undertake strong and continuous environmental, health and safety (EHS) initiatives, and the entire group is constantly conducting such activities. Our Management Philosophy emphasizes these topics in the following sentences: "The TEL Group places the highest consideration on the global environment, as well as the safety and health of its employees, customers and every person connected, directly or indirectly, with our business activities. We believe that keeping safety, health and the environment foremost in our thoughts will build trust in our business and result in long-term profit growth for the company."

EHS Promotion System

Our EHS system takes the form of three pillars: "Product EHS," which advances EHS priorities in our products in general; "Customer-site EHS," which advances those priorities during and after start-up of our products; and "Factory and Office EHS," which concerns TEL's facilities.

TEL's EHS Promotion System



EHS Management System

TEL is pursuing certification under ISO 14001 at all our plants. In FY 2005, one each of our manufacturing plants and offices acquired certification.

ISO 14001-qualified plants and offices

Company name	Plant/office name	Certification date	Certification number
Tokyo Electron AT Ltd. Tokyo Electron FE Ltd.	Sagami plant	December 10, 1997	1110-1997-AE-KOB-RvA
	Tohoku plant	February 19, 1998	1118-1998-AE-KOB-RvA
Tokyo Electron AT Ltd.	Yamanashi plants (Fujii/Hosaka area)	May 15, 1998	1124-1998-AE-KOB-RvA Rev.1
	Miyagi plant	March 1, 2005	01245-2005-AE-KOB-RvA
Tokyo Electron Kyushu Ltd.	Saga plant	March 12, 1998	1119-1998-AE-KOB-RvA
	Kumamoto/Koshi/Ozu plants	March 26, 1998	1120-1998-AE-KOB-RvA Rev.1
Tokyo Electron Device Ltd.	Yokohama office	July 14, 2004	EC04J0144

EHS Activities Monitoring System

In order to strengthen our EHS management system, we are increasing the monitoring that verifies the system function and results. Monitoring is done within plants and offices, within the Group, or by third parties. We are especially focusing on the TEL Internal Assessment, a program of mutual EHS evaluations by representatives of many plants and offices, which was instituted in FY 2003. In FY 2005, the three topics of Product EHS Compliance, Product EHS Performance, and Environmental Performance and Legal Compliance were added to the earlier programs, which focused on labor safety and health. These measures have reinforced our ability to check the environmental and safety performance of individual pieces of equipment as well as to allow plants to check each other's environmental management.



On-site assessment

Environmental Risk Management

All our plants use the Plan → Do → Check → Action (PDCA) cycle for product improvements. This cycle is mandated under the ISO 14001 standard for reducing environmental burden. Estimates of risks to the environment are also determined in accordance with this system and measures are taken for designs which have especially serious environmental burden. There are some issues which we are addressing in advance of environmental law. We believe that taking action on global warming in accordance with the Kyoto Protocol is the most important issue for the near future.

Abiding by the Law

TEL operates in strict obedience to the law. We closely track new environmental laws and emissions regulations and for some substances have enacted independent standards that are stricter than legally required. In FY 2005, we were not subject to legal actions of any kind with regard to environmental accidents, violations, fines or complaints.