

# EHS Management

TEL Group has gone global with its EHS activities.

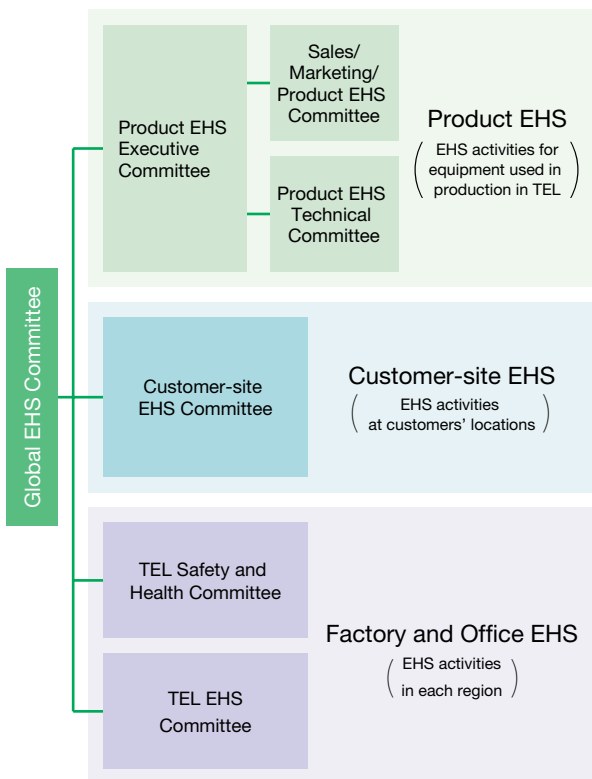
## TEL's EHS

Based on the recognition that TEL's business activities affect the environment, we have been conducting environmental management and obtaining the certification based on ISO14001 at each plant since 1997. We also recognize that the need for every person involved in our business to continuously lead safe, healthy and satisfying lives is as vital as our attention to environmental issues. In order to clarify our position, we formulated the TEL Credo and Principles on Environmental Preservation and the TEL Credo and Principles on Health and Safety in 1998. We have also clearly articulated our positions on the environment, health and safety in our management philosophy and promoted implementation of our EHS (Environment, Health and Safety) system throughout TEL group companies.

## EHS Promotion Structure

EHS-related activities are supported by the three pillars of: "Product EHS," "Customer-site EHS," and "Factory and Office EHS."

### TEL's EHS Promotion System



## EHS Management System

Each of the manufacturing plants have formulated environmental management systems and obtained certification based on ISO14001. Yokohama office of Tokyo Electron Device Ltd. and Miyagi plant of Tokyo Electron AT Ltd. are to be awarded certification in 2004. We are also forming a Occupational Safety and Health Management System based on OHSAS18001 and the guidelines of the Japan Ministry of Health, Labor and Welfare as a part of EHS management.

### ISO14001-qualified plants and the plants to be awarded certification

Company name	Plant and office name	(Scheduled) Certification date	Certification number
Tokyo Electron AT Ltd. Tokyo Electron FE Ltd.	Sagami plant	December 10, 1997	1110-1997 -AE-KOB-RvA
Tokyo Electron AT Ltd.	Tohoku plant	February 19, 1998	1118-1998 -AE-KOB-RvA
	Yamanashi plant (Fuji/Hosaka area)	May 15, 1998	1124-1998 -AE-KOB-RvA Rev.1
	Miyagi plant	To be awarded in December 2004	
Tokyo Electron Kyushu Ltd.	Saga plant	March 12, 1998	1119-1998 -AE-KOB-RvA
	Kumamoto/Koshi plant	March 26, 1998	1120-1998 -AE-KOB-RvA
	Ozu plant	August 27, 1999	1414-1999 -AE-KOB-RvA
Tokyo Electro Device Ltd.	Yokohama office	To be awarded in July 2004	

## EHS Activities Monitoring System

In order to strengthen our EHS Management System, TEL is striving to raise the monitoring standards. The monitoring of this system and its accomplishments are executed in parallel by the plants, within the TEL group companies and by third parties. The most actively promoted of these at present, is the TEL Internal Assessment, which is an interchange of EHS evaluations conducted by EHS representatives from each plant. It started in FY 2003. In FY 2004, it was performed at two plants. In FY 2005, we are bringing the standard higher by adding Environmental Performance and Legal Compliance and product EHS to the current Occupational Health and Safety and Work Safety as new items.



On-site inspection