

EHS Management

The Tokyo Electron Group is globally conducting environmental, health and safety (EHS) activities.

Basic Idea Behind EHS Activities

The Tokyo Electron Group conducts EHS activities, regarding people's health and safety and the global environment as its management priorities. In operating our business, we place first priority on environmental conservation activities and on health and safety, aiming to become a group of companies trusted by everyone involved in our business operations. As a responsible member of society, we make efforts to contribute to a more affluent society. In the Tokyo Electron Group Credo and

Principles on Environmental Preservation, which we revised in May 2006, we make it clear that we will develop products in line with a clearly defined environmental roadmap and verify the environment-friendliness of the products at their design, manufacturing, and use stages. The Credo and Principles also clearly state that the Tokyo Electron Group will disclose the results of verification and other relevant information to stakeholders via environmental and social reports and other means.

The Tokyo Electron Group Credo and Principles on Environmental Preservation

The Tokyo Electron Group Credo on Environmental Preservation

The Tokyo Electron Group believes that preserving the global environment and constantly improving it is one of the most important objectives for mankind as well as its business. Based on this credo, we are determined to expand our business by maintaining harmony with the global environment, and thus win the trust of our many customers, shareholders, employees, and society in general.

The Tokyo Electron Group Principles on Environmental Preservation

- 1. Continuous Improvement**
The Tokyo Electron Group is conscious that products manufactured by the Group affect the environment, and based on this awareness, we, with our customers and suppliers, shall continually strive to minimize the impact of processes and operations on the environment. We will develop products consistent with a clearly defined environmental roadmap for the Group products, verifying the appropriateness of efforts during design, manufacture, and use. To further confirm the appropriateness of such efforts, we will undertake activities that fully take into account regulatory and industry requirements and the needs of customers and other stakeholders.
- 2. Knowledge**
The Tokyo Electron Group continually strives to enhance its understanding of the impact that the Group has on the environment and the responsibility that this entails. In addition, the Group aims to gain a qualitative grasp of environmental factors, and the impacts resulting from its activities and operations.
- 3. Performance Criteria**
In addition to strict adherence to environmental laws, treaties, and agreements, the Tokyo Electron Group will also promote conservation of the global environment by formulating activity plans that take into account industry standards and various other environmental requirements.
- 4. Disclosure**
In addition to ensuring that all employees clearly understand our environmental concepts, policies, the state of company contributions toward environmental protection, and the state of product-related environmental efforts, as well as improving levels of awareness, we will disclose relevant information to those outside the company via environmental reports and other means.
- 5. Partnership**
The Tokyo Electron Group actively participates in environmental protection activities practiced by its customers, suppliers, and communities.

May 26, 2006

The Tokyo Electron Group Safety and Health Credo and Principles

The Tokyo Electron Group Safety and Health Credo

Safety and health training are required for all employees and board members of the Tokyo Electron Group. Our profit and delivery date requirements must not be met at the sacrifice of human life and the safety of our facilities and equipment.

The Tokyo Electron Group Safety and Health Principles

- 1. Continuous Improvement**
The Tokyo Electron Group is conscious that the factors that affect the safety and health of customers and its employees exist at the stage of manufacturing, transportation, installation, use, maintenance, and service of its products. Based on this awareness, we shall continually strive to improve the safety and health of our products and eliminate factors that affect human health.
- 2. Knowledge**
The Tokyo Electron Group continually strives to enhance its understanding of safety and health and improve these conditions for all people working at its sites. To that end, the Group aims to gain a qualitative and quantitative grasp of safety and health factors on its activities and operations.
- 3. Performance Criteria**
As well as strictly observing mandatory safety and health laws, treaties, and agreements, the Tokyo Electron Group strives to enhance its own safety and health management system and improve global safety and health programs by the proactive establishment of aggressive safety and health performance criteria.
- 4. Disclosure**
The Tokyo Electron Group shares information about its safety and health credo, policies, and the progress of its safety and health activities with all board members and employees, and will publish its progress to the general public as the need arises.
- 5. Partnership**
The Tokyo Electron Group participates in safety and health activities practiced by its customers, suppliers, and communities.

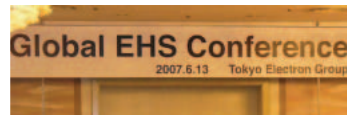
November 27, 1998

TOPICS

Global EHS Conference

The Tokyo Electron Group held its Global EHS Conference in June 2007, participated by management of the Group and the members of the EHS Committees.

At the beginning of the Conference, the Chairman and President of TEL explained the Group's future direction and plans for establishing a safety culture within the Group and for environmental protection. Subsequently, the representatives of each district and business unit (BU) gave presentations and actively discussed EHS-related matters.



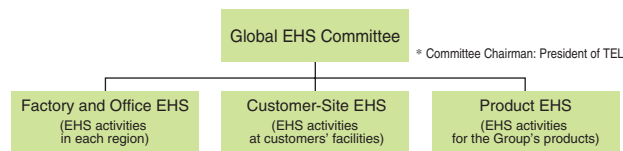
The Global EHS Conference

EHS Promotion System

Our EHS system takes the form of three pillars: Product EHS, which advances EHS priorities in our products in general; Customer-Site EHS, which advances those priorities during and after start-up of our products; and Factory and Office EHS, which concerns our facilities.

The Tokyo Electron Group companies, in particular TEL's manufacturing subsidiaries, started developing and implementing environmental management systems based on ISO 14001 in 1997, and obtained ISO 14001 certification.

Tokyo Electron Group's EHS Promotion System



ISO 14001-Certified Plants and Office

Company name	Plant/office name	Certification date	Certification number
Tokyo Electron PS Limited Tokyo Electron AT Limited	Sagami Plant	December 10, 1997	1110-1997-AE-KOB-RvA
Tokyo Electron Tohoku Limited	Tohoku Plant	February 19, 1998	1118-1998-AE-KOB-RvA
Tokyo Electron Kyushu Limited	Kumamoto/Koshi/Ozu/Saga Plants	March 26, 1998	1120-1998-AE-KOB-RvA
Tokyo Electron AT Limited	Yamanashi Plant (Fuji/Hosaka district)	May 15, 1998	1124-1998-AE-KOB-RvA
	Miyagi Plant	March 1, 2005	01245-2005-AE-KOB-RvA
Tokyo Electron Device Limited	Yokohama Office	July 14, 2004	EC04J0144

EHS Activities Monitoring System

In order to strengthen our EHS management system, we are increasing the level of monitoring that verifies the system function and results. Monitoring is done from multiple viewpoints within plants and offices, within the Group, or by third parties. We are especially focusing on the Tokyo Electron Group Internal Audit, a program of mutual EHS evaluations by representatives of many plants and offices, which was instituted in FY 2003.

In FY 2007, in response to an increasing need to manage chemical substances contained in products across the entire supply chain and in compliance with the Japanese Industrial Safety and Health Act revised in 2006, we added some new audit items to ensure that EHS was examined appropriately in cooperation with our suppliers



▲ On-site Audit

and partner companies. (The revised law demands the enhancement of safety instructions and messages to be given by a primary employer* to the related contractors.) We will continue to monitor our EHS management system with this extended scope, which checks our EHS activities more strictly.

* **Primary employer:** According to the revised Industrial Safety and Health Act, a primary employer means a primary company that arranges for the employees of its contractors to carry out a part of the company's work at one single place in cooperation with the company's own employees.

EHS Risk Management System

At manufacturing subsidiaries of TEL, environmental and safety risks are estimated based on ISO 14001 and OHSAS 18001 standards for labor safety and health management systems. These subsidiaries are implementing measures to eliminate higher risks first. Also, they are endeavoring to reduce some risks although they are not yet legally required to do so. We believe it most important to implement anti-global warming measures in line with the Kyoto Protocol targets in future EHS risk management.

Abiding by the Law

The Tokyo Electron Group operates in strict obedience to the law. We closely track new environmental laws and emissions regulations and for some substances have enacted independent standards that are stricter than legally required. In FY 2007, we were not subject to legal actions of any kind with regard to environmental accidents, violations, fines, or complaints.

EHS Training

The Tokyo Electron Group offers EHS training under the principle of "the necessary training for the necessary people." Training courses are grouped by rank and are open both to Group employees and to employees of cooperating companies who work at the Group's facilities. An EHS training program is also a required part of the curriculum for new hires. In addition, in order to further facilitate EHS activities, we provide training on team resource management focusing on communication within a team as well as safety training for middle-level managers.

EHS Training

Environment

- Special training (for internal environmental auditors, special training on key environmental aspects of work)
- ISO 14001-based environmental training (for manufacturing plants)
- Training on environmental activities (for office facilities)

Health and Safety

- Equipment-specific training
- Customer-specific site entry training
- Safety training for employees traveling overseas
- Advanced safety training
- Basic safety training