

Consolidated Subsidiaries (As of March 31, 2020)

▶▶ **JAPAN**

- Tokyo Electron Technology Solutions Limited
- Tokyo Electron Kyushu Limited
- Tokyo Electron Miyagi Limited
- Tokyo Electron FE Limited
- Tokyo Electron BP Limited
- Tokyo Electron Agency Limited

▶▶ **U.S.**

- Tokyo Electron U.S. Holdings, Inc.
- Tokyo Electron America, Inc.
- TEL Technology Center, America, LLC
- TEL Venture Capital, Inc.
- TEL Manufacturing and Engineering of America, Inc.

▶▶ **EUROPE**

- Tokyo Electron Europe Limited
- Tokyo Electron Israel Limited
- TEL Magnetic Solutions Limited

▶▶ **ASIA**

- Tokyo Electron Korea Limited
- Tokyo Electron Taiwan Limited
- Tokyo Electron (Shanghai) Limited
- Tokyo Electron (Kunshan) Limited
- Tokyo Electron Singapore Pte. Limited

29 consolidated subsidiaries in total, including the above 19 companies

Investor Information (As of March 31, 2020)

Corporate Name and Head Office:

Tokyo Electron Limited
Akasaka Biz Tower
3-1 Akasaka 5-chome, Minato-ku,
Tokyo 107-6325, Japan

Established:

November 11, 1963

Annual General Meeting of Shareholders:

June

Common Stock:

Stock trading unit	100 shares
Authorized	300,000,000 shares
Issued	157,210,911 shares
Number of shareholders	30,348

Common Stock Listed on:

Tokyo Stock Exchange 1st Section
(Stock code: 8035)

Independent Auditor:

KPMG AZSA LLC

Administrator of Shareholders' Register:

Sumitomo Mitsui Trust Bank, Limited
4-1 Marunouchi 1-chome, Chiyoda-ku,
Tokyo, Japan

Direct mail and inquiries to:
Sumitomo Mitsui Trust Bank, Limited
8-4 Izumi 2-chome, Suginami-ku,
Tokyo, 168-0063, Japan
Tel (toll free): 0120-782-031 (available
only in Japan)

For Further Information, Contact:

Investor Relations
Tokyo Electron Limited
Akasaka Biz Tower
3-1 Akasaka 5-chome, Minato-ku,
Tokyo 107-6325, Japan
Tel: +81-3-5561-7000

Website:

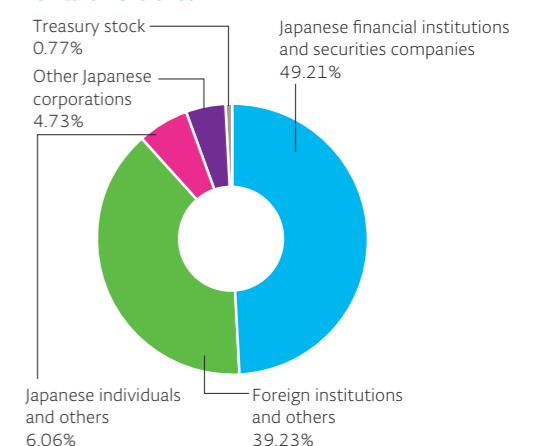
www.tel.com

Major Shareholders:

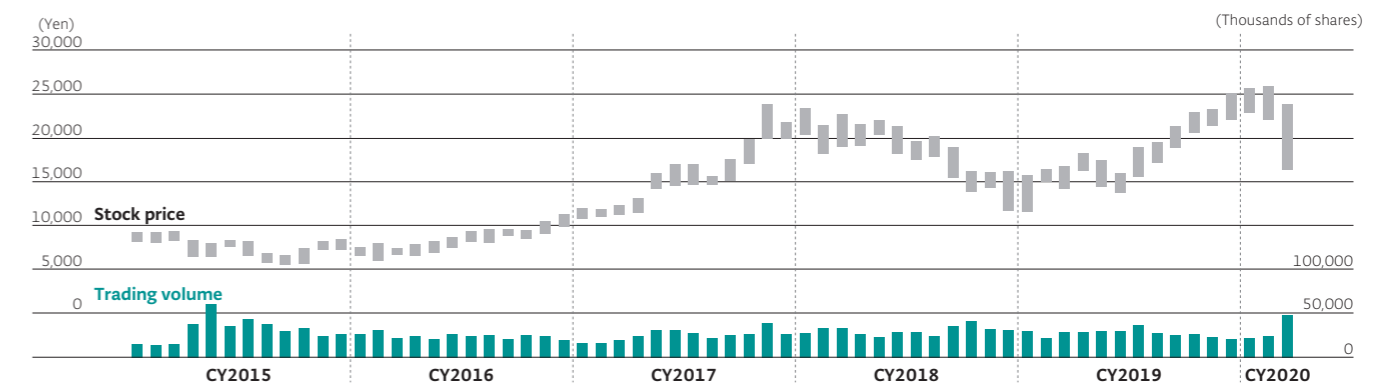
	Number of shares held (thousands)	Voting share ratio (%)
The Master Trust Bank of Japan Limited (trust account)	31,397	20.12
Japan Trustee Services Bank Limited (trust account)	14,888	9.54
JP Morgan Chase Bank 385632	8,712	5.58
Tokyo Broadcasting System Holdings, Inc.	5,991	3.84
Japan Trustee Services Bank Limited (trust account 7)	4,145	2.65
Trust & Custody Services Bank, Limited (securities investment trust account)	3,049	1.95
Japan Trustee Services Bank Limited (trust account 4)	2,902	1.86
SSBTC CLIENT OMNIBUS ACCOUNT	2,628	1.68
JP Morgan Chase Bank 385151	2,599	1.66
Japan Trustee Services Bank Limited (trust account 5)	2,584	1.65

Notes: 1. Shares of less than one thousand have been rounded down in the "Number of shares held."
2. Voting share ratios are calculated excluding treasury stock (1,213,526 shares). Figures are truncated after the second decimal place. Treasury stock excludes the 472,030 Company shares owned by the executive compensation Board Incentive Plan (BIP) trust account and the share-delivering Employee Stock Ownership Plan (ESOP).

Distribution of Ownership among Shareholders:



Stock Price and Trading Volume



Years ended March 31	2016	2017	2018	2019	2020
High (yen)	8,450	12,285	23,875	21,935	25,875
Low (yen)	5,519	6,603	11,455	11,595	13,760
Total shareholder return (%)	90.3	152.0	253.3	214.4	273.4
(TOPIX, dividends reinvested)	(89.2)	(102.3)	(118.5)	(112.5)	(101.8)