



# Technology Enabling Life

With manufacturing locations in Yamanashi and Iwate prefectures, Tokyo Electron Technology Solutions is a leading manufacturer of semiconductor and display production equipment and has been engaging in deposition, etch system, test system, and display system globally for 40 years since its establishment in 1983. We would like to express our sincere gratitude for the strong support of the local community and our partners. We couldn't be who we are today without them.

As the tide of digitalization accelerates throughout society, such as the spread of artificial intelligence (AI) and 5G, the digital transformation of industries, and the utilization of the metaverse, semiconductors have become essential to people's lives as important infrastructure, the foundation of society. Semiconductor chips continue to evolve further, allowing for miniaturized pattern designs, larger memory capacity, higher processing of logic circuits, improved device reliability, lower power consumption and more.

As the world's leading manufacturer of semiconductor and display production equipment, we aim to achieve both "digital" and "green" at the same time and to realize the world's top-class smart factories in our pursuit of technological innovation. Further, we will work on cutting-edge, environmentally friendly technologies throughout our supply chain toward a sustainable and prosperous future in which people and nature coexist, while placing top priority on the safety and health of the people involved in our business as well as the protection of the global environment.

We sincerely ask for your continued warm support in the future.

Yuichiro Morozumi  
President&Representative Director  
Tokyo Electron Technology solutions Ltd.



# CORPORATE DATA



## ● Tokyo Electron Technology Solutions Ltd.

Established : July 1, 1983      Number of employees : 2,765 (as of April 1, 2023)  
Capital : 4 billion yen

### ● Fujii Office

2381-1 Kitagejo, Fujii-cho  
Nirasaki City, Yamanashi  
407-8511  
Tel : +81-551-22-8611

### ● Hosaka Office

650 Mitsuzawa,  
Hosaka-cho, Nirasaki  
City, Yamanashi 407-0192  
Tel : +81-551-22-8611

### ● Tohoku Office

52 Matsunagane,  
Iwayado, Esashi,  
Oshu City, Iwate 023-1101  
Tel : +81-197-35-5101

### ● Fuchu Office

30-7 Sumiyoshi-cho  
2-chome, Fuchu City,  
Tokyo 183-8705  
Tel : +81-42-333-8111

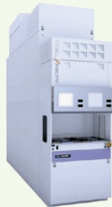


# BUSINESS DESCRIPTION

## Deposition System

In the thermal processing and single-wafer deposition, we develop, design and manufacture batch and single-wafer systems.

Employing optimum deposition technique, the systems can form a wide variety of thin films such as dielectric, DRAM capacitor, metal and other high-quality films that are necessary for the manufacturing of semiconductor devices. Our products use oxidation, annealing, CVD, ALD, and PVD technologies, offering high performance and excellent productivity.

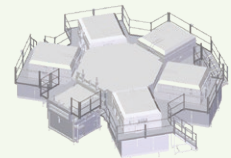


TELINDY PLUS™

## Display Production Equipment

We develop, design, and manufacture plasma etch/ash systems. The system removes various thin films using etching gas in plasma state according to the integrated circuit pattern that is formed on an array board by the coater/developer.

We meet customer demands for better quality, lower cost and larger screens with our excellent technologies and products.



Betelex™

## Test System

We develop, design, and manufacture wafer prober equipment. A wafer prober will be connected with the tester and electrically test the ICs by touching its electrodes with probe needles.

Next-generation test system Cellcia™ has multiple test cells, enabling high-speed batch processing and significant cost savings for our customers.



Cellcia™

## Etch System

We develop, design, and manufacture dry-cleaning systems. In addition to conventional plasma etching technology, there has been a growing need for gas chemical etching technology in recent years on the back of demand for ultra-miniaturization and high-performance processing technology. The multi-chamber platform Certas LEAGA™ delivers high performance and excellent productivity.



Certas LEAGA™

